



2022 ROADMAP TO SHARED PROSPERITY

BUILDING EQUITABLE ECONOMIES



**CALIFORNIA
STEWARDSHIP
NETWORK**



**CALIFORNIA
DREAM INDEX**

BUILDING EQUITABLE ECONOMIES

California Forward is committed now more than ever to building inclusive, equitable and sustainable economies that give more Californians the opportunity to thrive.

As we look toward a new year, we are hopeful that the potential of another budget surplus will drive significant investments that will help us address some of our most pressing challenges in a meaningful way.

We made impressive strides this past legislative year. We worked to craft and pass the \$600-million Community Economic Resilience Fund (CERF) to invest in our regional economies in a radically different way. We worked in coalition to secure a historic \$6-billion investment in broadband that will reduce digital inequity across the state. Our 2019 “[California’s Wildfire Crisis: A Call To Action](#)” report was a wake-up call for the state that led to a commitment of \$1.5 billion to prevent catastrophic wildfires. And, we put homeownership back on the agenda as a key tool for building racial and economic wealth equity.

While we’re proud of this work, we can’t afford to let our guard down. It’s important to recognize that the choices we’ve made during this fiscal year will mean very little if we don’t reimagine and create an economy that truly works for everyone.

That’s why California Forward (CA FWD) leads this movement, bringing people together across political ideologies, interests and communities.

We start with the evidence. The data gathered by the [California Dream Index](#) serves as our “North Star,” allowing us to track economic mobility and keep ourselves and others accountable for progress.

We center our work in California’s diverse regions with the power of the [California Stewardship Network](#), an alliance of regional leaders who are focused on triple-bottom-line solutions that balance equity, environmental sustainability and economic growth.



Through the [California Economic Summit](#) and our work groups, we lift up policy agendas and recommendations that will be advanced throughout the year.

When appropriate, we move policy recommendations forward through our sister advocacy organization, the [CA FWD Action Fund](#).

This is who we are and what we do. None of it is possible without you. Together, we can lift more Californians toward their dreams of a better tomorrow.

Join us.





"I think what makes this Summit unique and special is you're not just dreamers. You're doers. These are the folks on the front line each and every one of you are out there every single day, doing the hard work.

We often talk in politics about 'what' and 'why,' not enough about 'how,' and I think what distinguishes this Summit—and so many of the leaders in this room—is you're on the ground, working region by region, focusing on collaboration, focusing on supporting one another, building capacity and partnerships, and that's why I wouldn't want to miss it."

— Governor Gavin Newsom

CELEBRATING 10 YEARS TOGETHER

During the past 10 years, CA FWD's network of collective action has been at the center of creating and collaborating on solutions that move our state forward on some of our toughest challenges, including:

- Supporting the crafting, advancing and implementation of Citizens Redistricting, Top Two Primary Reform, Term Limit Reform, 72-hour public disclosure for legislation and the Rainy Day Fund
- Inventing new community investment tools for local governments to address challenges at scale
- Launching the California Dream Index to track economic mobility and keep us accountable for progress
- Helping secure:
 - \$1.48B over 6 years in the Strong Workforce Program to promote Career Technical Education Programs
 - \$600M Community Economic Resilience Fund
 - \$6B investment to close the digital divide
 - \$1.5B investments in forest management and wildfire resilience



2022 PRIORITY ACTIONS

CA FWD's commitment to creating inclusive and sustainable growth is driven by supporting interrelated policy action areas that help all Californians prosper. From housing for all, to ecosystems and climate resiliency, these diverse areas are inextricably linked. The policy priorities listed below are advanced in the coming year with the strength of our collaborative approach, including the [California Stewardship Network](#), the [California Economic Summit network and work groups](#), and our [Young Leaders Advisory Council](#)—and we measure our progress with the [California Dream Index](#).



HOUSING FOR ALL



* Priority Actions

- **Strengthen local capacity** and support homeowners, community-based developers and contractors by bringing together a range of financial tools, partners and programs that will help scale efforts to create affordable, entry-level homes
- Design the California Dream for All program framework to **provide financing assistance for qualified homebuyers**
- **Support legislation that increases the overall supply** of housing in the state



ECOSYSTEMS & CLIMATE RESILIENCY



* Priority Actions

- Advocate to **ensure California builds on the state's 2021 \$1.5-billion investment for wildfire and forest resiliency** to reach the \$3-5 billion that will be required annually, with a focus on developing the workforce, infrastructure, community capacity, partnerships and regulatory environment needed to address the size and scale of the crisis
- **Broaden outreach, coalition-building and regulatory advocacy.** Goals include fostering collaboration across diverse communities, sectors and landscapes; addressing barriers to prescribed fire and tribal cultural burning; developing thriving wood products industries; and protecting and enhancing upper watershed health
- **Integrate a regional climate adaptation agenda** through collaboration with the Alliance of Regional Collaboratives for Climate Adaptation (ARCCA)
- **Develop an energy advocacy plan** that incorporates regional variations and ensures a sustainable, reliable and equitable energy system for all Californians



"We truly need to apply an equity lens in the work that we do, especially in the work that directly affects the lives of the people we are trying to help."

— Samuel Assefa, director of the California Office of Planning and Research



THRIVING ECONOMIES

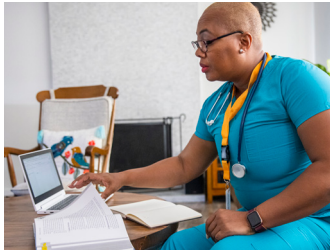


* Priority Actions

- Advance state-level solutions to capital access barriers faced by small businesses owned by people of color in California
- Support legislation aligned with the principles and recommendations included in the Investing in Small Businesses Owned by People of Color work group [framework](#)
- Advance inclusive economic growth by supporting the equitable implementation of the [Community Economic Resilience Fund \(CERF\)](#) and building power and generational wealth for communities of color through the New Paradigm coalition



EDUCATION CRADLE TO CAREER



* Priority Actions

- Support the recommendations of the Recovery with Equity Task Force report to drive meaningful change in the state's workforce and higher education systems
- Develop a state policy agenda for cradle to career issues informed by members of the California Stewardship Network and support aligned legislative activity
- Develop cross-sector workforce strategies to ensure California is able to make progress in key strategic areas



CONNECTING CALIFORNIA



* Priority Actions

- Advocate for the state's historic investments, legislative actions and **State Broadband Action Plan to be implemented swiftly, efficiently and effectively** in tandem with new federal funding streams
- Advance regional solutions to the broadband crisis by supporting the work of the Regional Broadband Consortia in advancing solutions tailored to communities
- Support efforts that boost the capacity of local leaders and staff to use economic development tools such as Enhanced Infrastructure Financing Districts that can help local and regional economies capture economic growth and target strategic investments in jobs, infrastructure and housing

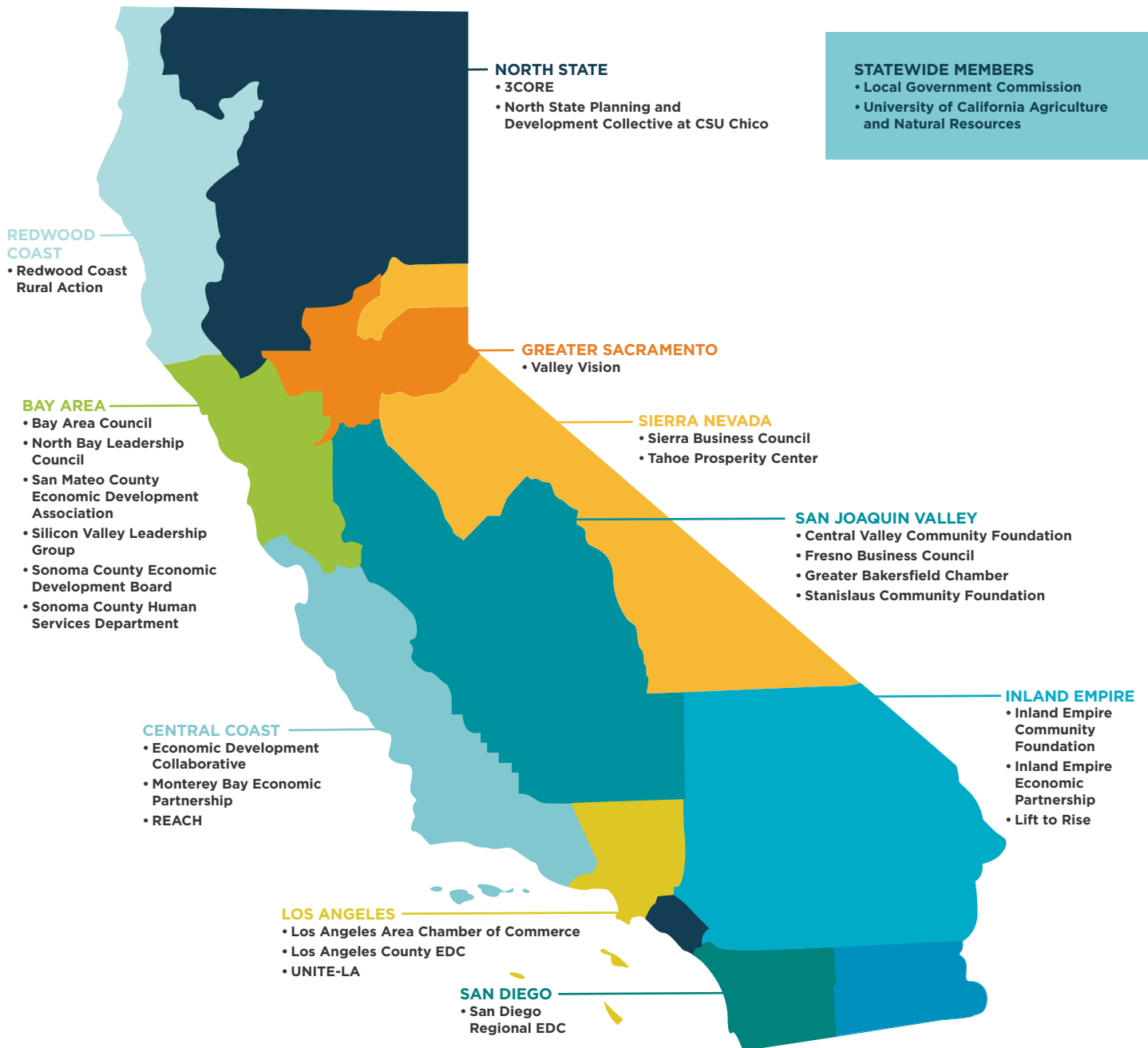


"I think I can sum it up in the words 'California Forward.' If we want to see the future of California, you have to involve the future and that's us, as young leaders."

— Sauntharya Manikandan, CA FWD Young Leaders Advisory Council member

MOVING THIS WORK FORWARD

CALIFORNIA STEWARDSHIP NETWORK



California Forward and the California Stewardship Network would like to extend a special thank you to the following sponsors for core support.



CALIFORNIA ECONOMIC SUMMIT WORK GROUPS

Work groups are the primary vehicle through which CA FWD advances specific policy action areas that are critical to driving shared prosperity and greater economic mobility for all Californians.

Expanding Homeownership

Creating wealth through racial and geographic equity in affordable homeownership

Wealth creation through homeownership has been largely inaccessible to communities of color and marginalized and disenfranchised populations due to historical and ongoing systemic discrimination in the housing market. The work group is focused on developing scalable and sustainable place-based solutions to increase ownership of homes by middle- and lower-income communities and communities of color as part of CA FWD's broader efforts to increase the state's overall supply of housing.

 Learn more at: cafwd.org/homeownership2021

Empowering Resilient and Productive Landscapes

Reducing wildfire risks, enhancing landscape and watershed health and supporting rural communities

During 2021, California lawmakers made notable investments and policy decisions to advance forest and community resiliency in the face of wildfires and a changing climate. While the investments were significant, the wildfire crisis continues with its steep toll on people, landscapes, water and other natural resources and communities. The Resilient Landscapes work group, along with other partners and stakeholders, are continuing to advocate for investments and solutions to the crisis.

 Learn more at: cafwd.org/resilientlandscapes

Investing in Small Businesses Owned by People of Color

Redressing racial inequity through access to capital

Numerous studies have shown the economic benefits of supporting and investing in local and small businesses owned by people of color, which often serve as the main catalyst behind employment growth and help attract new investment opportunities in underserved communities. This group seeks to achieve an inclusive economic recovery by focusing on lending practices to better support inclusion, lender-readiness and technical assistance offerings.

 Learn more at: cafwd.org/smallbusiness



Providing Meaningful Career Pathways

Connecting the next generation to work-based learning opportunities

The shifting policy and economic landscape post-COVID presents an opportunity to think about how we better align state resources to meet the workforce needs of a range of industries that offer good-paying jobs and will help California build back more equitably. As we look toward meeting the growing demand for skilled workers, this group is focused on helping employers, education institutions and regional intermediary organizations leverage historic state investments and integrate efforts that support better learner outcomes.

 Learn more at: cafwd.org/careerpathways

Ensuring Broadband for All

Bridging the digital divide

During 2021, California made historic investments and policy commitments aimed at resolving California's digital crisis. These accomplishments included \$6 billion in broadband infrastructure improvements approved through budget legislation, and passage of two companion bills (AB 14 and SB 4) authorizing extension of the surcharge on intrastate telecommunications services to support the California Advanced Services Fund (CASF) through 2032. The Ensuring Broadband for All work group, along with other California Economic Summit partners, actively advocated for these state-level investments and policy achievements.

 Learn more at: cafwd.org/broadbandforall

Increasing Community Investment

Immediate economic stimulus by funding housing and infrastructure

The Increasing Community Investment work group continues to focus on rethinking the process for making equitable infrastructure investments for economic revitalization through the development of state, regional and local funding tools. Building on last year's [white paper](#), the group works to identify steps the state can take to invest locally with immediate economic impact and advocates for legislation that would provide economic stimulus through place-based economic development tools.

 Learn more at: cafwd.org/communityinvestment



“We must invest in communities and neighborhoods where there has been traditional and historical disinvestment. Whether we’re talking about the wealth gap, the earnings gap, the education gap, to even the healthcare gap, we have to intentionally and systematically create policies and programs and, most importantly, partnerships that work to close those gaps.”

— Tara Lynn Gray, director of the California Office of the Small Business Advocate





Tracking our progress.

“The California Dream Index provides us a baseline understanding of what people are facing across our state as we attempt to maximize our potential and, more importantly, dream not just for ourselves but the next generation.”

-Jeffery Wallace, president & CEO, LeadersUp and member of CA FWD’s Leadership Council

Learn more at cafwd.org/california-dream-index



 **Young Leaders Advisory Council**
2021-2022



Shaping our future.

The CA FWD Young Leaders Advisory Council is committed to developing intergenerational and sustainable policy solutions for the future. As members of the generation who will inherit the outcomes of the policy decisions made today, the Council recognizes the urgency of being part of policy discussions and actions impacting the state.

The Council accomplishes its mission by participating and leading in regional planning efforts, organizational partnerships, purposeful representation, legislative education and participation.

Learn more and get involved at cafwd.org/ylac.



2022 CALIFORNIA ECONOMIC SUMMIT

October 27-28 | Bakersfield

SUMMIT LEADERS AND PARTNERS

HONORARY CHAIRS

GAVIN NEWSOM

Governor of California

LEON PANETTA

The Panetta Institute
for Public Policy

DIANNE FEINSTEIN

U.S. Senator

SUMMIT ADVISORS

LENNY MENDONCA

McKinsey & Company, Inc.
(Emeritus)

ASHLEY BOREN

Sustainable Conservation

JAMES GORE

California State Association
of Counties

LAURA TYSON

UC Berkeley

STEVE WESTLY

The Westly Group

SUNNE WRIGHT MCPEAK

California Emerging
Technology Fund

SUMMIT COMMITTEE

BILL ALLEN

Los Angeles County EDC

MATT BOGOSHIAN

American Manufacturing
Communities Collaborative

OSCAR CHAVEZ

Sonoma County Human Services
Department

KRISTIN CONNELLY

East Bay Leadership Council

HEIDI HILL DRUM

Tahoe Prosperity Center

JACQUELINE MARTINEZ

GARCEL (CO-CHAIR)
Latino Community Foundation

PAUL GRANILLO

Inland Empire
Economic Partnership

JENNIFER HERNANDEZ

Holland & Knight

GLENDA HUMISTON

UC Agriculture and
Natural Resources

JIM MAYER

California Forward (Emeritus)

KATHLEEN MOXON

Redwood Coast Rural Action

CYNTHIA MURRAY

North Bay Leadership Council

DEBORAH NANKIVELL

Fresno Business Council

NICK ORTIZ (CO-CHAIR)

Greater Bakersfield Chamber

PETE PETERSON

Pepperdine University

MARK PISANO

USC Sol Price School of
Public Policy

SEAN RANDOLPH

Bay Area Council
Economic Institute

BRUCE STENSLIE

Economic Development
Collaborative

ASHLEY SWEARENGIN

Central Valley
Community Foundation

VAN TON-QUINLIVAN

Futuro Health

KATE MEIS WRIGHT

Local Government Commission

GREG WENDT

Stakeholders Capital

THANK YOU TO OUR SPONSORS

Amazon

Applied Materials

Arizona State University

Bank of America

Biocom California

Blue Shield of California

Blue Shield of California

Foundation

Calbright College

California Community Colleges

Chancellor's Office

California Department of Housing
and Community Development

California State University,

Monterey Bay

CETF

Edison International

Employment Training Panel

Greater Bakersfield Chamber

Half Moon Bay Brewing Company

Hartnell College

Kaiser Permanente

Moulton Niguel Water District

PayPal

PG&E

San Benito Health Foundation

SoCalGas

South Swell Ventures

University of California,

Santa Cruz

Union Bank

University of California

Agriculture and Natural
Resources

Westfield Group

THANK YOU TO OUR WORK GROUP LEADS

EXPANDING HOMEOWNERSHIP

Adam Briones, California
Community Builders

Tiena Johnson Hall, California
Housing Finance Authority

Jennifer LeSar, LeSar Development
Consultants

**EMPOWERING RESILIENT AND
PRODUCTIVE LANDSCAPES**

Steve Frisch, Sierra Business
Council

Glenda Humiston, University of
California Agriculture and Natural
Resources

Bill Tripp, Karuk Tribe Department
of Natural Resources

**INVESTING IN SMALL
BUSINESSES OWNED BY PEOPLE
OF COLOR**

Josaline Cuesta, Small Business
Majority

Tara Lynn Gray, California Office of
the Small Business Advocate

Pat Fong Kushida, CalAsian
Chamber

**PROVIDING MEANINGFUL
CAREER PATHWAYS**

Su Jin Jez, California Competes

Jessica Ku Kim, Los Angeles
County Economic Development
Corp.

Heddy Nam, UNITE-LA

Michael Wiafe, CA FWD Young
Leaders Advisory Council

ENSURING BROADBAND FOR ALL

Eduardo González, CSU Fresno
Office of Community & Economic
Development

Trish Kelly, Valley Vision

Jason Schwenkler, CSU Chico
- North State Planning &
Development Collective

**INCREASING COMMUNITY
INVESTMENT**

Matt Horton, Milken Institute

Larry Kosmont, Kosmont
Companies

Mark Pisano, USC Sol Price School
of Public Policy

